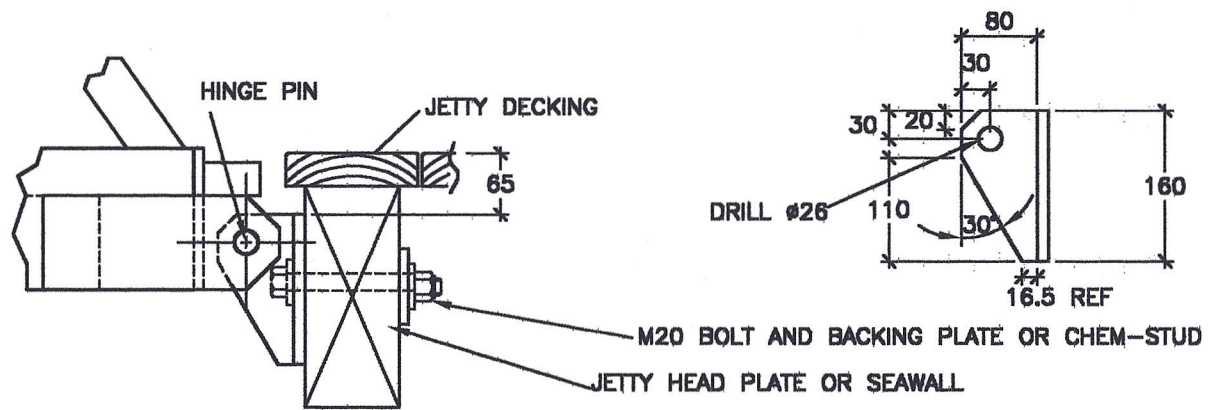
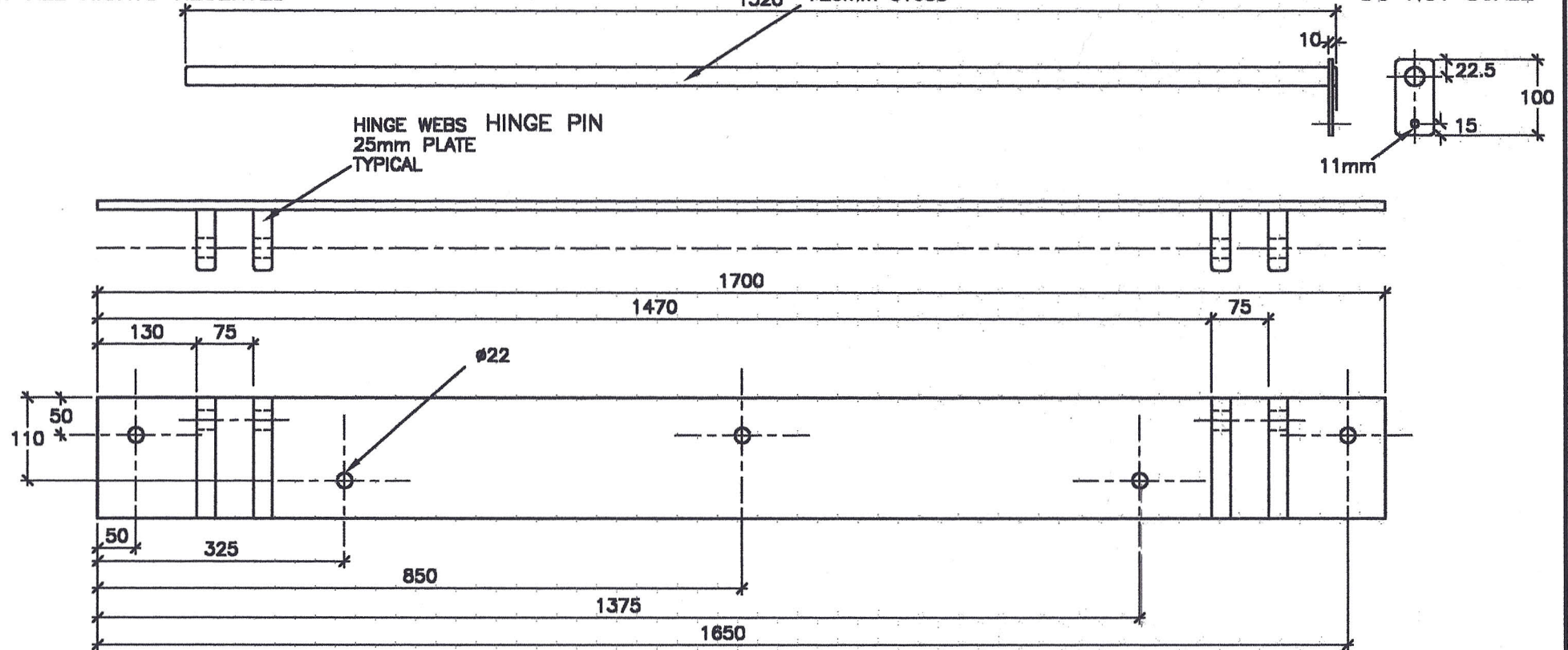


COPYRIGHT ALL RIGHTS RESERVED

1520 #25mm 316SS

DO NOT SCALE



NOTE--ALL STRUCTURE IS FULLY WELDED.
 -THE NOMINAL WELD SIZE IS TO BE 6mm.
 -ALL EXTRUSIONS ARE TO BE OF GRADE 6063 T5 OR EQUIVALENT
 -FILLER ALLOY IS TO BE OF GRADE 5356 OR EQUIVALENT MATERIAL OF SIMILAR OR GREATER STRENGTH.

HINGE ASSEMBLY SIDE VIEW

**MARINE DOCK SYSTEMS
PTY LTD**

ALUMINIUM RAMP
HINGE BRACKET

RAMP-2902
BRACKET AND
ASSEMBLY DETAIL



SCALE	N.T.S.	DWG	A4-2903	
DRAWN	J.P.M	REV	A	7,4,01
DATE	7,4,01	CHK		APP'D