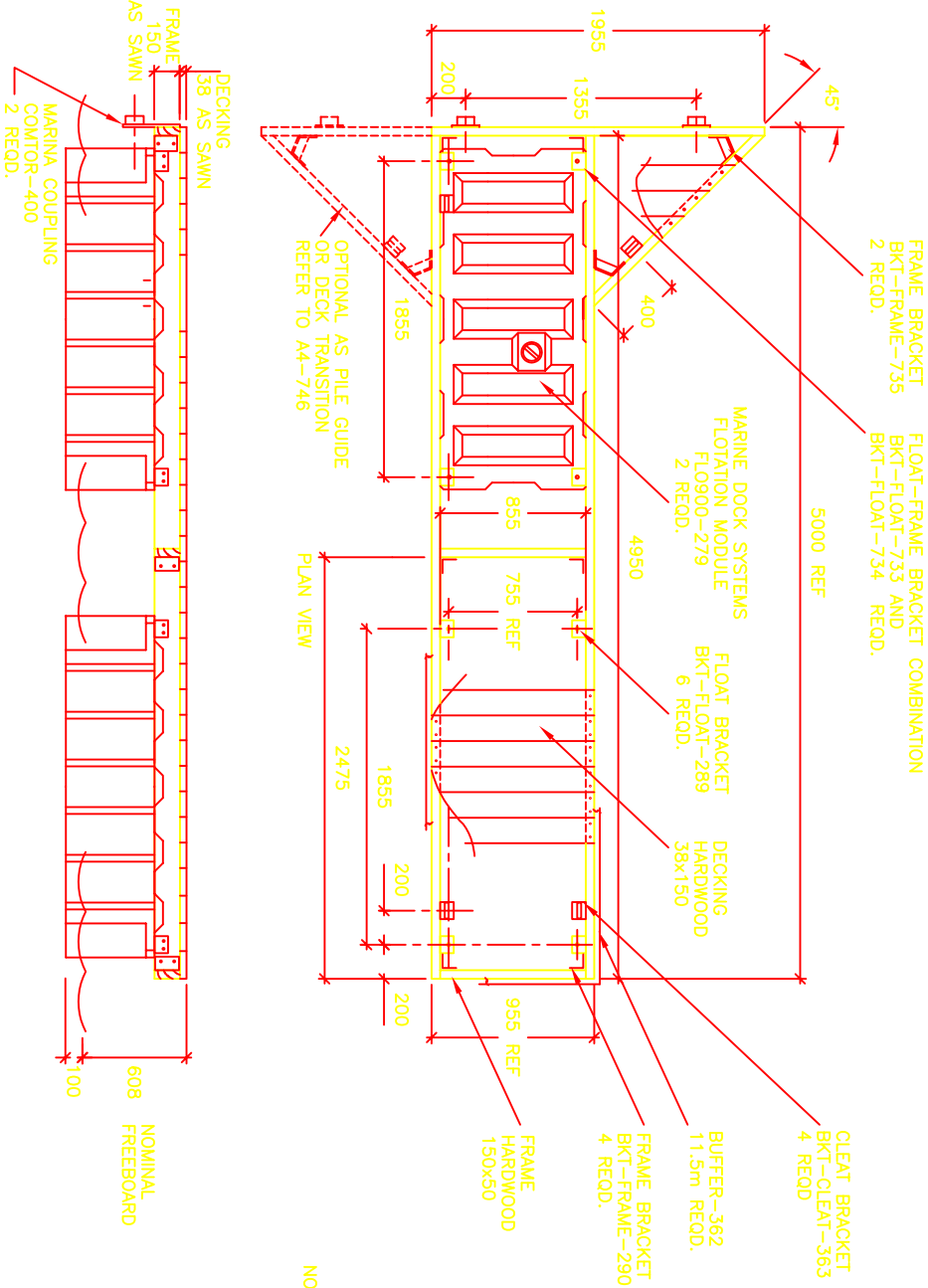


COPYRIGHT ALL RIGHTS RESERVED

DO NOT SCALE



FOR ADDITIONAL ASSEMBLY DETAILS, REFER TO THE FOLLOWING DRAWINGS:

- FRAME BKT- A4-736
- FLOAT AND DECK- A4-730
- CLEAT ASSEM- A4-717
- BUFFER ASSEM- A4-740
- FRAME-FLOAT BKT- A4-733
- COMTOR- A4-743

FASTENERS REQUIRED.

PART No.	ITEM	QTY. REQD.
737	3/8" BOLTx3 1/2"	8
370	3/8" BOLTx3"	64
372	1" WASHER	128
296	1 1/2" WASHER	16
371	3/8" NYLOC NUT	72
729	DECK SCREW	154
731	BUFFER SCREW	65
367	CLEAT SCREW	8
368	5/8" WASHER	8
369	5/16" NYLOC NUT	8

*FASTENERS FOR OPTIONAL TRANSITION ARE NOT INCLUDED IN TABLE.

NOTE--ALL TIMBER IS TO BE TREATED WITH A SUITABLE PRESERVATIVE. (CREOSOTE, DECKING PAINT, ETC)
 --ALL FASTENERS ARE CORROSION RESISTANT STAINLESS STEEL.
 --ALL EXPOSED BOLTS ARE TO BE RECESSED INTO THE TIMBER BY COUNTER BORING.
 --ALL BOLT THREADS ARE TO BE TREATED WITH ANTI-SIEZE OR EQUIVALENT LUBRICATING COMPOUND PRIOR TO FASTENING.
 --THIS DRAWING IS FOR A PONTOON OF TYPICAL DESIGN. ENGINEERING EVALUATION SHOULD BE PERFORMED FOR THE PONTOONS SUITABILITY FOR EACH PARTICULAR INSTALLATION.
 --VARIATIONS OF THIS DESIGN ARE AVAILABLE.

DECK AREA 5.325m²
 APPROX. WEIGHT 450kg

MARINE DOCK SYSTEMS
PTY LTD

1.0m x 5.0m FINGER
 2 x 900L FLOATS

MARINA FINGER
 PONTOON-840



SCALE	N.T.S.	DRAWING No.
DRAWN	J.P.M	A4-840
DATE	15.7.97	REV D