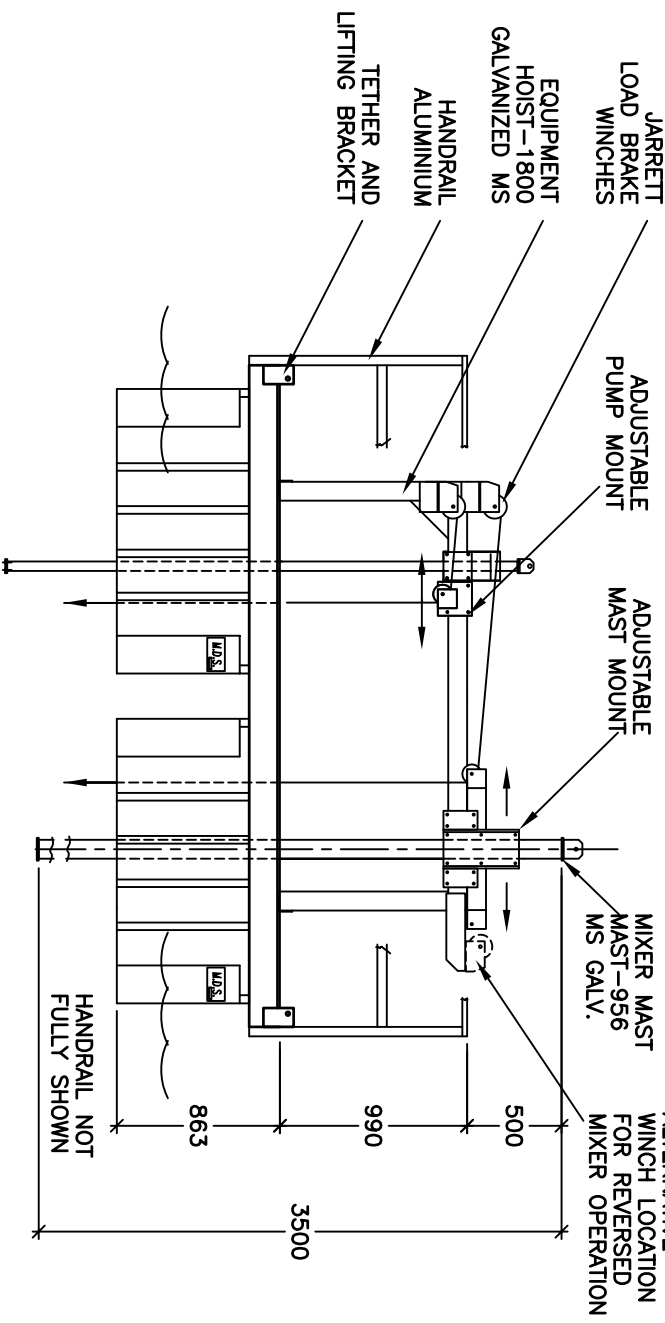
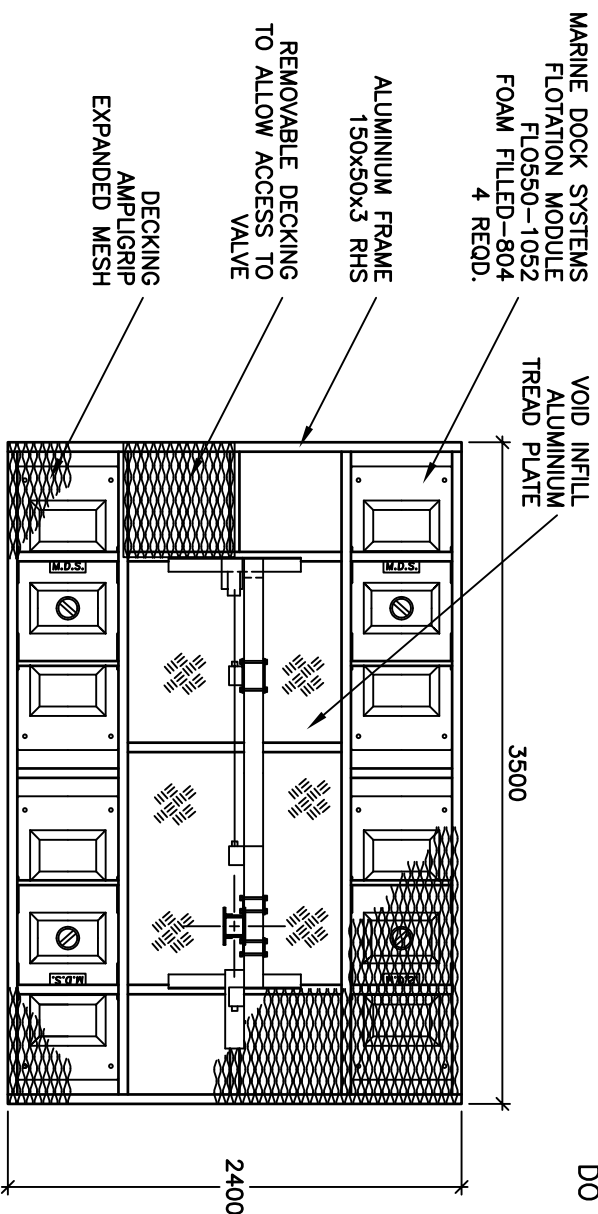
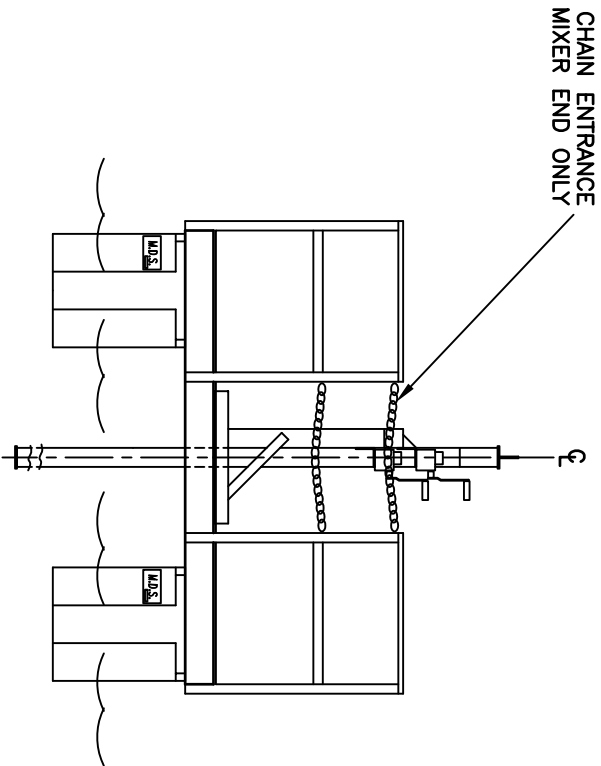


COPYRIGHT ALL RIGHTS RESERVED

DO NOT SCALE

- NOTE-ALL ALUMINIUM EXTRUSIONS ARE OF GRADE 6063-T5 OR EQUIVALENT.
- ALL STRUCTURE IS FULLY WELDED WITH A NOMINAL FILLET OF 5mm.
 - FILLER ALLOY IS GRADE 5356.
 - EQUIPMENT HOIST AND MIXER MAST IS HOT DIP GALVANIZED.
 - ALL FASTENERS ARE STAINLESS STEEL
 - DECKING IS AMPLIGRIP 201 SERIES.
 - PONTOON FRAME AND EQUIPMENT HOIST IS INSULATED WITH 3mm INSERTION RUBBER.
 - FLotation MODULES ARE MARINE DOCK SYSTEMS 550L. POLYETHYLENE MODULE WITH POLYURETHANE FOAM FILLING.



MARINE DOCK SYSTEMS
PTY LTD

SLUDGE POND
PONTOON

PONTOON-1810-2
WITH PUMP MAST



SCALE	N.T.S.	DWG	A4-1810-2	
DRAWN	J.P.M	REV	A	7,12,98
DATE	7,12,98	CHK		App'D