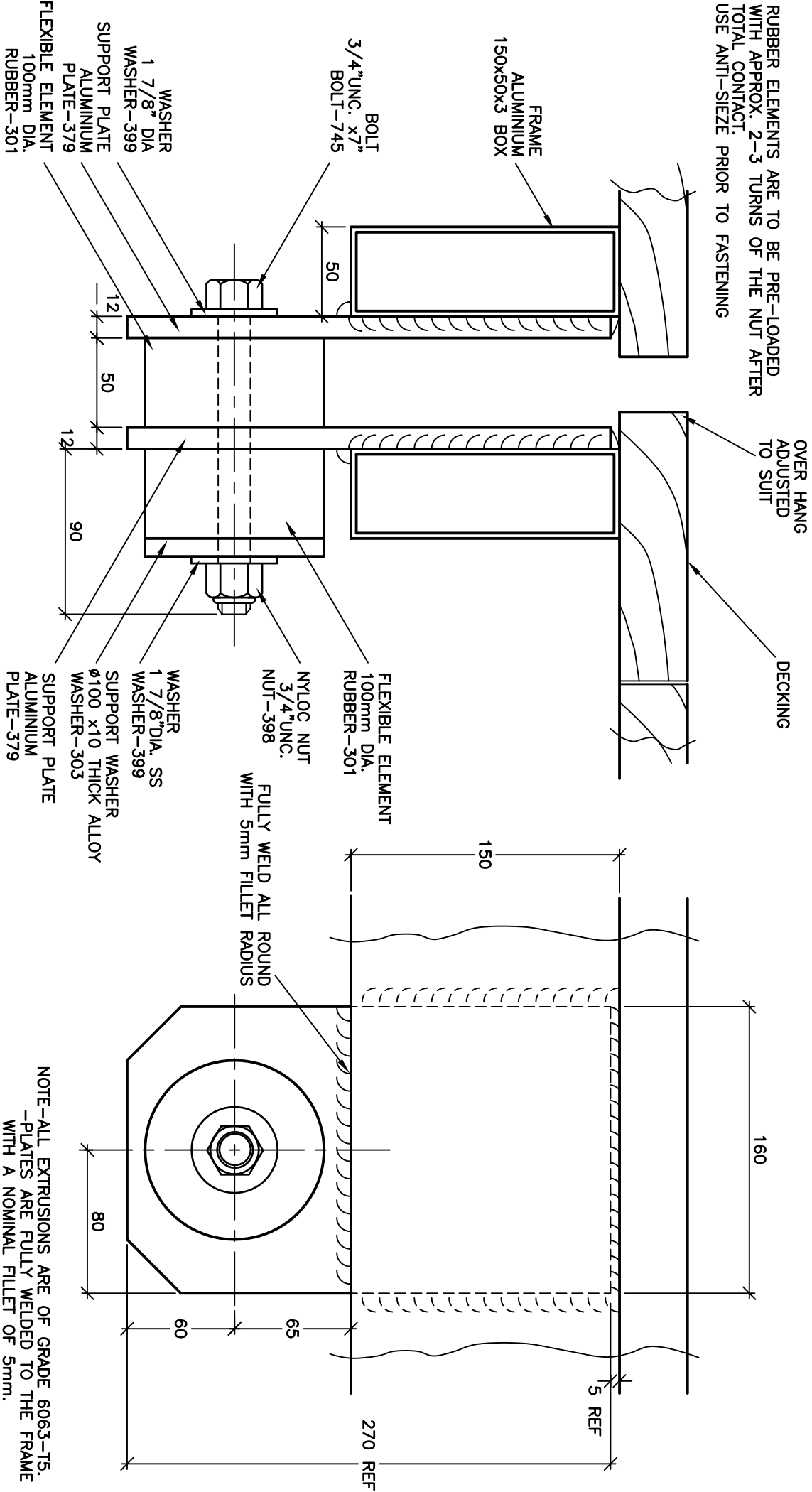


COPYRIGHT ALL RIGHTS RESERVED

DO NOT SCALE.

RUBBER ELEMENTS ARE TO BE PRE-LOADED WITH APPROX. 2-3 TURNS OF THE NUT AFTER TOTAL CONTACT. USE ANTI-SIEZE PRIOR TO FASTENING



COMTOR-400 IS USED TO COUPLE MARINA SECTIONS AND FINGERS TOGETHER.

*3/4" FASTENERS MAY BE SUBSTITUTED WITH M20 FASTENERS

NOTE-ALL EXTRUSIONS ARE OF GRADE 6063-T5.
 -PLATES ARE FULLY WELDED TO THE FRAME WITH A NOMINAL FILLET OF 5mm.
 -FILLER ALLOY IS OF GRADE 5356.
 -FASTENERS ARE CORROSION RESISTANT STAINLESS STEEL.
 -RUBBER ELEMENTS ARE 60 DURO BLACK NEOPRENE

MARINE DOCK SYSTEMS
PTY LTD

MARINA COUPLING
DETAIL

COMTOR-400
STANDARD



SCALE	N.T.S.	DRAWING No.
DRAWN	BJM	A4-1502
DATE	5,3,98	REV
		C